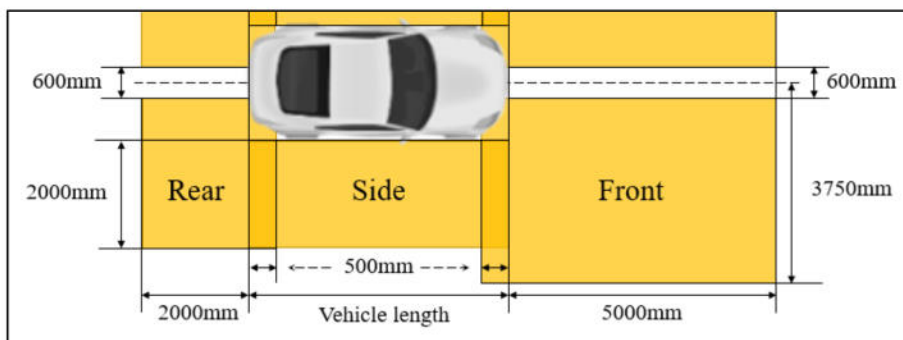


Signal Road Projector (SRP)

Introduction of SRP Module Demonstration

1. Direction indicator projector module

From the right side, Front DI projector, Side DI projector and Rear DI projector are set according to the area conditions below.



Note: The DI SRP demonstration will simulate the right hand side of the vehicle.

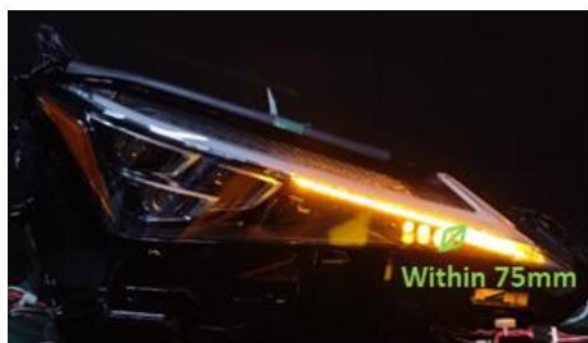
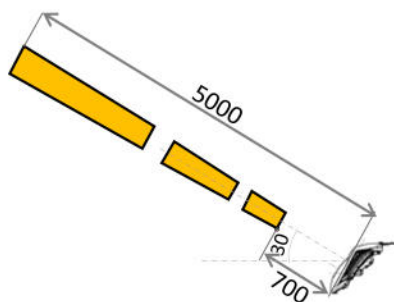
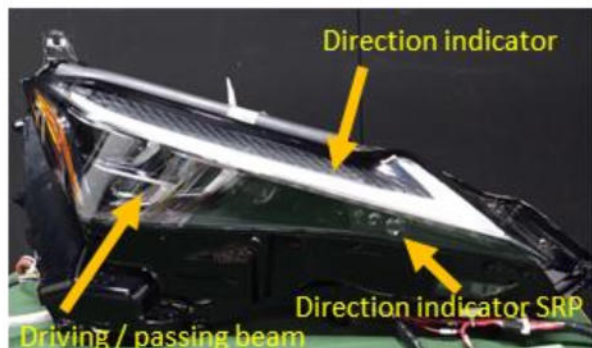
2. Reversing projector module

Each of the two modules is one Reversing projector type and is set to show you the reversing projection from the rear of the vehicle.

✂ GTB aims to give the opportunity to the participants at GRE-88 to see “live” two new independent light-signalling functions currently under development:

- ✓ “[Direction indicator projector](#)” is a lamp to provide enhanced recognition of direction indication to other road users by illumination of the ground surface. It is operated in conjunction with Direction Indicator Lamp.
- ✓ “[Reversing projector](#)” is a lamp to provide enhanced recognition of reversing indication to other road users by illumination of the ground surface. It is operated in conjunction with Reversing Lamp.

Introduction of SRP Module Demonstration (DI SRP)



Function:	Front Direction Indicator Projector
Type:	Grouped with Front Direction Indicator
Pattern:	Three Rectangles
Intensity (cd):	Max. 6400
Height (mm):	776
Illuminance (lx):	Max. 355
Operation:	Normal / Sequential Flashing
Frequency:	80 times/min.
Projection distance:	700 mm to 5,000 mm

Further Explanation:

- Direction indicator projector is grouped with direction indicator inside headlamp.
- Distance between direction indicator projector and direction indicator is less than 75mm, which makes them appear to be integrated.
- Frequency of direction indicator projector is linked with direction indicator.
- Direction indicator with flashing will not be adversely effected by sequential flashing of direction indicator projector.
- Projection length is set to 5,000 mm assuming use in urban area.
- Frequency is set to 80 times / min. so that furthest projection pattern is projected slightly longer time than 90 times / min.
- Sequential activation will make the projection easier to be noticed.

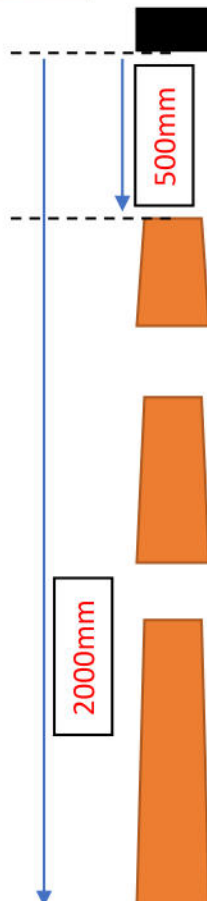
Introduction of SRP Module Demonstration (DI SRP)



Function:	Side Direction Indicator Projector
Type:	Independent from Side Direction Indicator
Pattern:	Three Rectangles
Intensity (cd):	Max. 7000
Height (mm):	700
Illuminance (lx):	Max. 970
Operation:	Normal Flashing
Frequency:	80 times/min.
Projection distance:	500 mm to 2000 mm

Further Explanation:

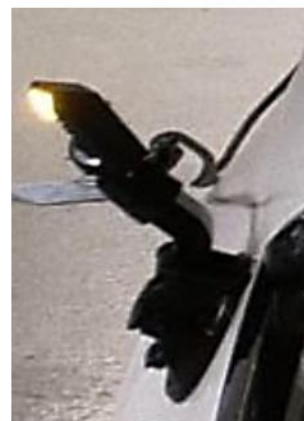
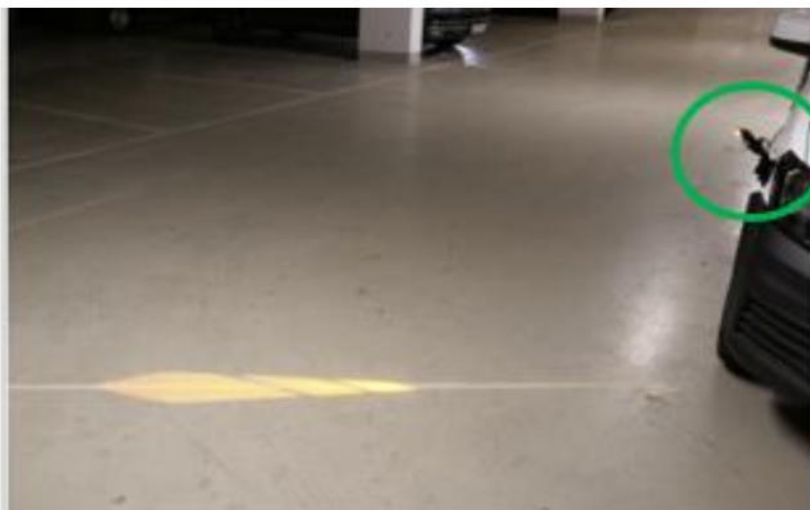
- Independent DI SRP
- Projection length is set to 2.000 mm
- Frequency is set to 80 times / min.



Introduction of SRP Module Demonstration (DI SRP)



Function:	Front & Rear Direction Indicator Projector
Type:	Independent from DI lamp
Distance to the car:	600mm
Projecting angle with the vehicle axis:	45° front DI projector / 90° rear DI projector
Pattern shape:	Free design
Pattern length:	1,2m
Pattern av. width:	0,25m
Intensity (cd):	2500
Illuminance (lx):	200
Operation:	Normal / Sequential Flashing
Frequency:	Adjustable – mock-up setting 80 times / min

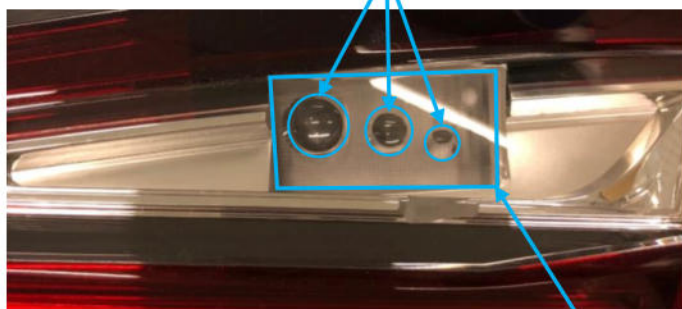


Introduction of SRP Module Demonstration (Reversing SRP)



Function:	Reversing Projector
Type:	Reciprocally incorporated with Reversing lamp
Pattern:	Three Rectangles
Intensity (cd):	6,300
Height (mm):	1000mm
Illuminance (lx):	280
Operation:	Lit with reversing lamp together
Frequency:	-
Projection distance:	873 mm to 2645 mm

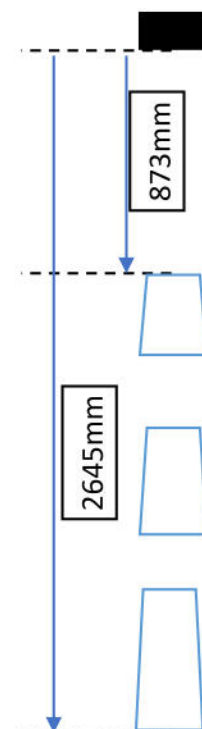
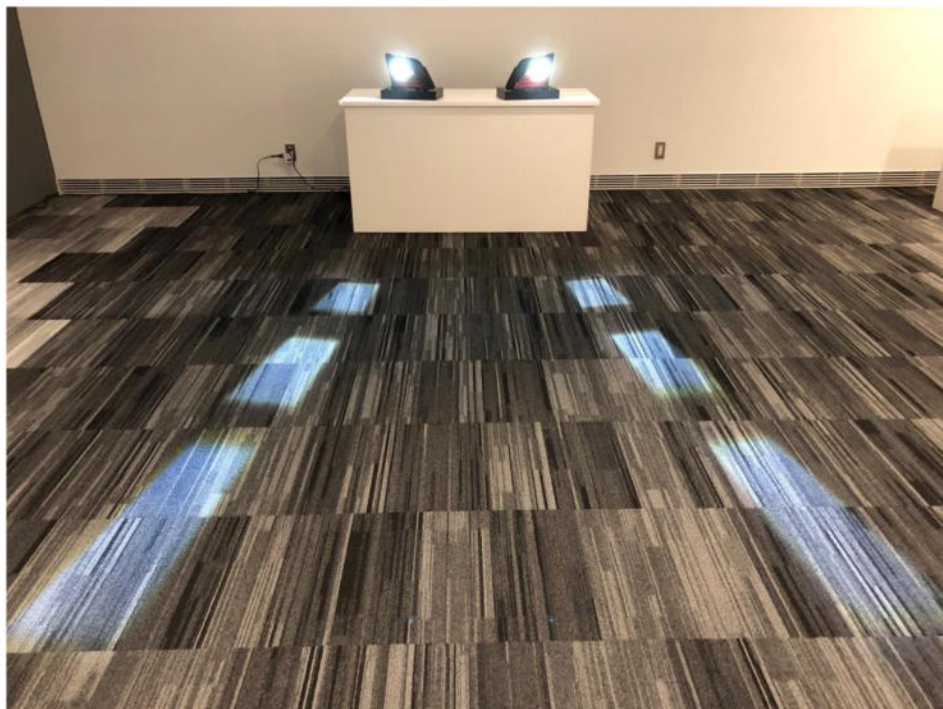
Reversing SRP is produced from these three circles.



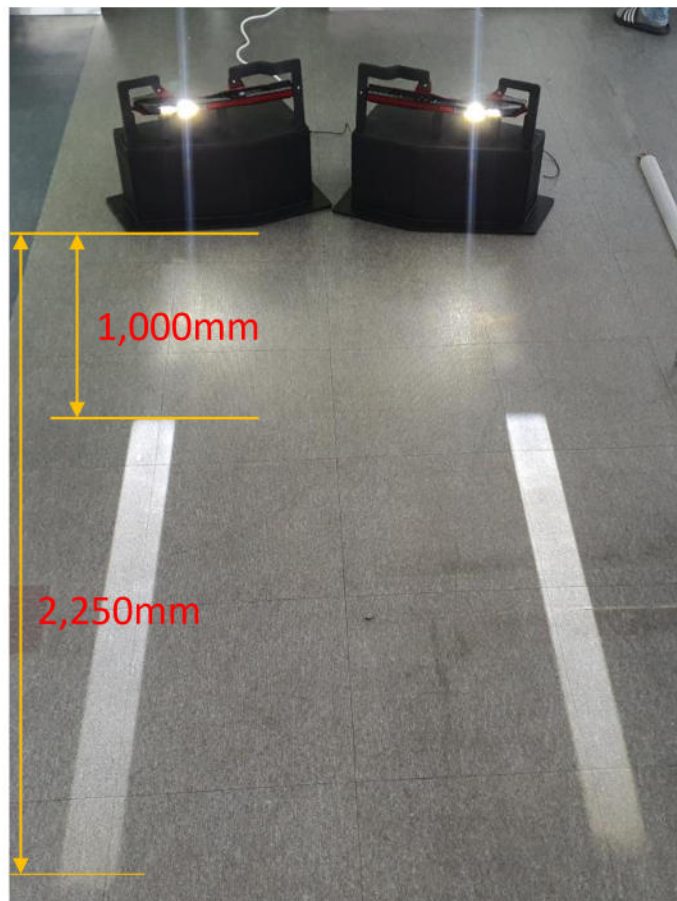
Reversing lamp

Further Explanation:

- Reversing projector is reciprocally incorporated with reversing lamp. In other words, the two functions have common apparent surface.



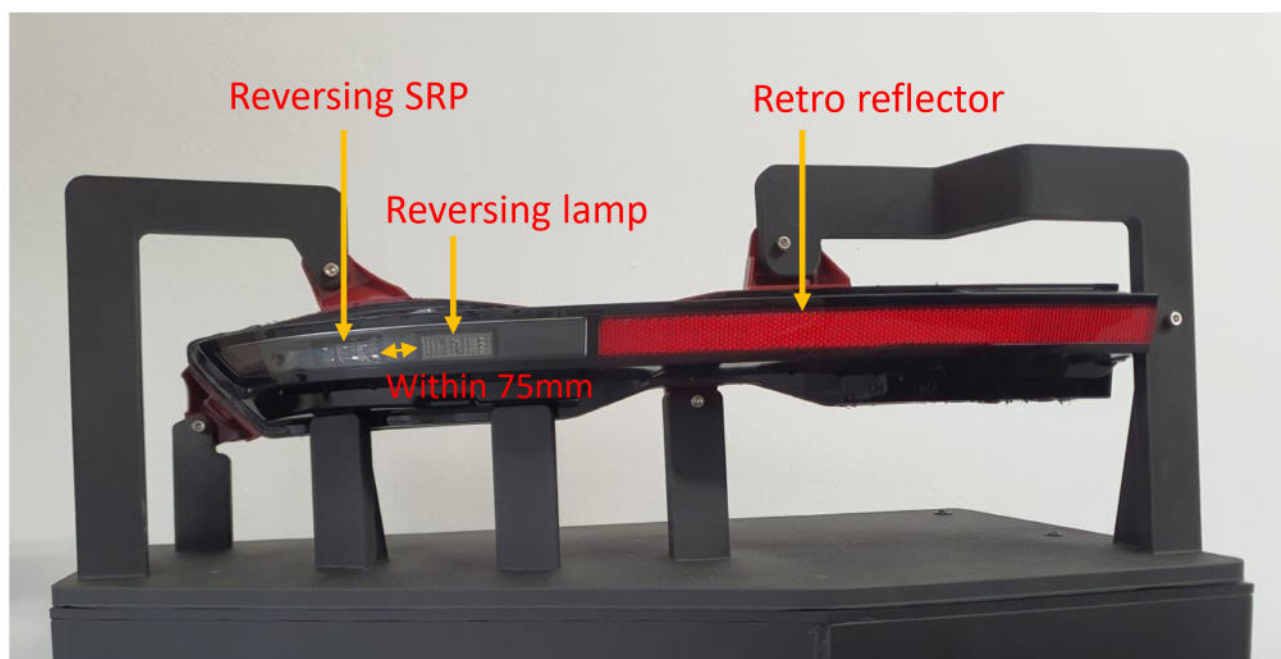
Introduction of SRP Module Demonstration (Reversing SRP)



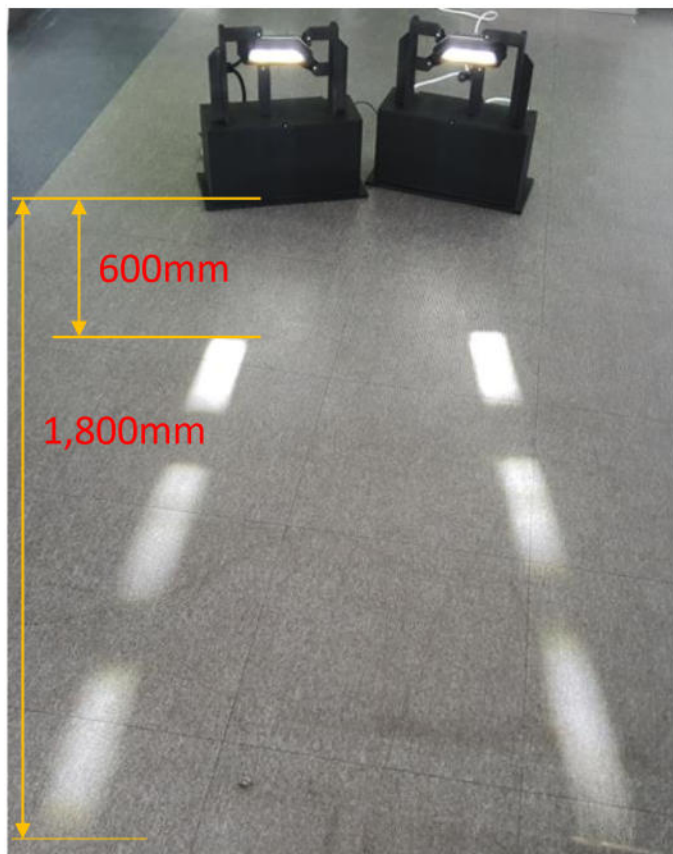
Function:	Reversing Projector
Type:	Grouped with Reversing lamp
Pattern:	One Rectangle
Intensity (cd):	3,700
Height (mm):	365
Illuminance (lx):	225
Operation:	Lit with reversing lamp together
Projection distance:	1,000 mm to 2,250 mm

Further Explanation:

- Reversing projector is grouped with reversing lamp.
- Distance between reversing projector and reversing lamp is less than 75mm, which makes them appear to be integrated.



Introduction of SRP Module Demonstration (Reversing SRP)



Function:	Reversing Projector
Type:	Reciprocally incorporated with Reversing lamp
Pattern:	Three Rectangles
Intensity (cd):	7,000
Height (mm):	373
Illuminance (lx):	425
Operation:	Lit with reversing lamp together
Frequency:	-
Projection distance:	600 mm to 1,800 mm

Further Explanation:

- Reversing projector is reciprocally incorporated with reversing lamp. In other words, the two lamp have One apparent surface.

